

Mapping of Urban Tanks / Rivers and it's Changes

Hindupur Urban Local Body, Sri Satya Sai District, Andhra Pradesh

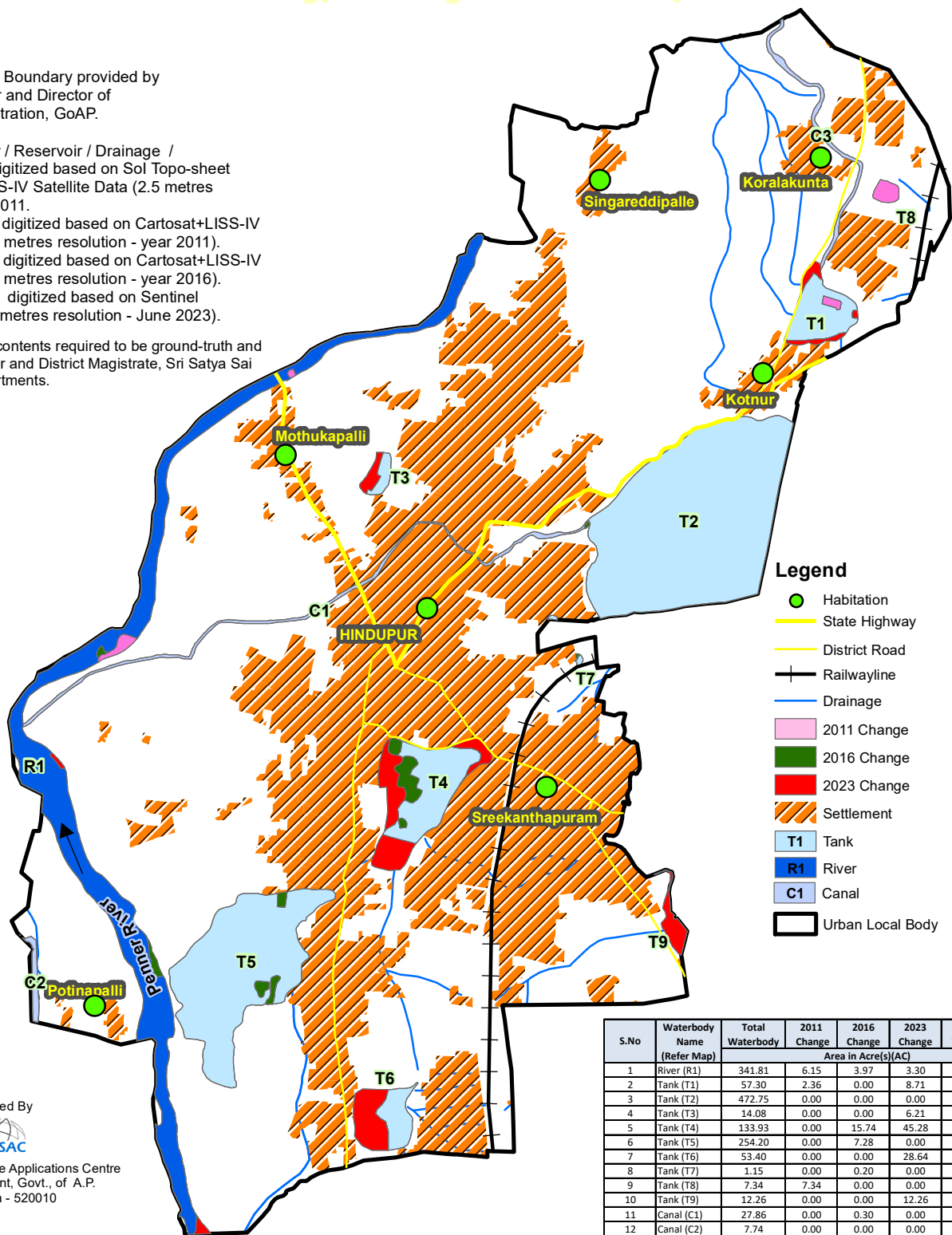
Source:

1. Urban Local Body Boundary provided by the Commissioner and Director of Municipal Administration, GoAP.

Data used:

2. Tank / Lake / River / Reservoir / Drainage / Canal boundary digitized based on Sol Topo-sheet and Cartosat+LISS-IV Satellite Data (2.5 metres resolution) year 2011.
3. Changes of 2011 digitized based on Cartosat+LISS-IV Satellite Data (2.5 metres resolution - year 2011).
4. Changes of 2016 digitized based on Cartosat+LISS-IV Satellite Data (2.5 metres resolution - year 2016).
5. Changes of 2023 digitized based on Sentinel Satellite Data (10 metres resolution - June 2023).

Note: This map and contents required to be ground-truth and vetted by the Collector and District Magistrate, Sri Satya Sai District and the Departments.



Legend

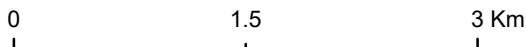
- Habitation
- State Highway
- District Road
- Railwayline
- Drainage
- 2011 Change
- 2016 Change
- 2023 Change
- Settlement
- T1 Tank
- R1 River
- C1 Canal
- Urban Local Body

S.No	Waterbody Name (Refer Map)	Total Waterbody	2011 Change	2016 Change	2023 Change	Remaining Waterbody
1	River (R1)	341.81	6.15	3.97	3.30	328.39
2	Tank (T1)	57.30	2.36	0.00	8.71	46.23
3	Tank (T2)	472.75	0.00	0.00	0.00	472.75
4	Tank (T3)	14.08	0.00	0.00	6.21	7.87
5	Tank (T4)	133.93	0.00	15.74	45.28	72.91
6	Tank (T5)	254.20	0.00	7.28	0.00	246.92
7	Tank (T6)	53.40	0.00	0.00	28.64	24.76
8	Tank (T7)	1.15	0.00	0.20	0.00	0.94
9	Tank (T8)	7.34	7.34	0.00	0.00	0.00
10	Tank (T9)	12.26	0.00	0.00	12.26	0.00
11	Canal (C1)	27.86	0.00	0.30	0.00	27.55
12	Canal (C2)	7.74	0.00	0.00	0.00	7.74
13	Canal (C3)	17.57	0.00	0.00	0.00	17.57
	Grand Total	1401.37	15.85	27.49	104.40	1253.63

Prepared By



Andhra Pradesh Space Applications Centre
ITE & C Department, Govt., of A.P.
Vijayawada - 520010



77°28'20"E 77°30'0"E 77°31'40"E

13°52'30"N

13°50'0"N

13°47'30"N

13°52'30"N

13°50'0"N

13°47'30"N

